

Village Link

The Newsletter of Hotham, Everthorpe and North Cave
December 2024 - January 2025



*Merry Christmas and a Happy New Year
2025*

All Saints North Cave with the Aurora - James Bailey



Bennys Cottage

21A Nordham
North Cave HU15 2LT
Cottages.com

2 Bedroom - one double bedroom and one single - semi-detached property sleeping 3 people. Great base for exploring the East coast and surrounding countryside.

Flexible arrival days, bookings taken for one night, weekend, midweek stays or longer. Free WiFi.

Contact: Simon 07877336348 or Sheryl 07848951730

simsam777@tiscali.co.uk
shez61164@yahoo.co.uk

NIGEL CUNDILL DOMESTIC APPLIANCE REPAIRS

Prompt, Friendly Local
Service & Advice
30+ years Experience
Washers, Dryers,
Cookers
Dyson Servicing, etc.



Call Nigel

07962 467111 - ncrs@live.com

Marjoram Nurseries

01430 424493
Woodside House, Low
Road, Everthorpe

Hanging Baskets - Basket & Patio Plants
Bark Chippings- Multi Purpose Compost



CHRISTMAS TREES
POMANDERS & WREATHS



Perennials & Shrubs
Fresh Vegetables
British Hand Made Glazed Pots



- A TRANQUIL, PICTURESQUE SETTING
- CATS ONLY, NO DOGS BOARDED
- EXTRA LARGE HEATED CHALETs WITH STUNNING VIEWS
- FAMILY RUN BY FAB TRAINED HUSBAND AND WIFE TEAM

01430 421975

www.evergreencattery.co.uk
email: cats@evergreencattery.co.uk
6 Station Road, North Cave, East Yorks, HU15 2LA

BROUGH GARAGE DOORS

Repair - Service - Installation - Automation

Door looking like this?



We can either repair it..



...or, replace it?



07718 955 307



Based in South Cave



Specialist in all types of Garage Doors & Brands



Same day repairs available



Free 'No Obligation' Quotes



24/7 Emergency call out



New Door Installations



Automation of existing door



www.broughgaragedoors.co.uk



info@broughgaragedoors.co.uk

Checkatrade.com
Where reputation matters

Jan Odey (1934 - 2024) - Eulogy

The following Eulogy was delivered by Christian Carver at the service in All Saints Church, North Cave on 4th November following Jan Odey's death at her home in Hotham on 4th October.

Mrs Odey, Mrs O, Janet, Jan – a truly amazing lady, known and loved by so many.

Jan was certainly one of a kind, the like of which there are few. I don't know anyone else who had such a broad spectrum of friends – *true* friends.

To expand on that, a true friend is someone who cares for you – many here did that for Jan and she in turn was delighted to be YOUR friend.

A true friend is also honest, loyal, non-judgemental, and dependable. Jan was all of these.

Jan was no ordinary person – she was quite unique in her own way. She showed amazing resilience, courage, and had a wonderful sense of curiosity. Even though her behaviours could often be described as unusual, we all saw it as 'typical Jan'.

She was incredibly dedicated to the community, the church, and everyone around her. Jan led a remarkable life, and both inspired and amused many that she met.

I am proud that Jan was once a Carver, being 4 years older than my father who sadly died all too early – now an incredible 21 years ago.

Jan and Peter spent the war years either living at The Croft North Cave with their Grandparents or at Ryeland Hill in South Cave. Inevitably many of Jan's early memories revolved around animals.

When she had measles



Jan asked her mother to bring her bantams to see her in her bedroom. Juliet duly obliged and the bantams spent the night on her bed.

Jan was always mad about horses and as a 10 year old was discovered trying her hand at being a blacksmith – heating a horseshoe in the fireplace and hammering it on the hearth.

Jan eventually got her own pony, having ridden just about everyone else's in the village. Her father had placed a bet on the grand national and the horse he backed duly won at 33-1. He spent the entire winnings buying Jan her first pony – for the princely sum of £1.



Jan met Dick in the hunting field and the interest in horses passed down to Caroline and Ginny. Then further down the line to grand-daughter Phoebe.

I was reminded recently of a couple of horse related stories while Jan and Dick were at Hotham Hall. One was the time when local newlyweds, the Bryers, were asked to dinner at the Hall. "Do you ride" said Jan to Elspeth? "Yes" said Elspeth. Jan then disappeared but soon returned with her favourite pony which she paraded around the dining table for all to see.

Another time Jan's mare was having a foal...

Eulogy to Jan Odey (contd)

just at the time when Jan and Dick were hosting a dinner party. Needless to say, the mare and foal came first, and the hostess failed to make an appearance for most of dinner.

Jan's biggest love was her animals; and if you had a horse, a dog, or a cat you were instantly a good egg and she'd make every effort with you. She'd soon know everything about you but more importantly she'd know all about your four legged friend.

Jan also had a passion for people. She loved strangers, she was inquisitive in the extreme. I've known people leave Jan's company suffering from exhaustion; having been grilled about who, what, and where they are from. But she was genuinely interested, and it didn't matter if you were tilled or serving the tea – in fact she preferred to speak to the staff at a black tie event, rather than speak to fellow guests dressed in all their finery.

Jan was genuine – she genuinely wanted to help others, and Hotham was her spiritual home. Hotham was everything to Jan and her knowledge was remarkable. Jan loved nothing more than a ride out in a car with a friend and would never stop talking from the moment she was picked up to the point she returned home.

Conversations invariably revolved around hunting, hedges, family friends from North and East Yorkshire, and her forbears. She was a great storyteller and could tell you who was with who and maybe who shouldn't have been with who.

And of course there were 20 questions about you. She'd lean across and say "Now tell me". I often dreaded those words for fear she was going to ask me a series of awkward questions. Which she often did... and each answer led to another question..!

But I remember when I moved to Hotham in 1990 and Jan was quick to include me in anything and everything. Youth Club Committee, Village Hall Committee, fetes, Parish Council. But I loved Hotham too. I also loved the

fact that Jan was Jan. Numerous times I was told "I've seen your Aunt in my skip and she's told me off for throwing X Y and Z away"

And when it came to house renovations it wasn't unusual to find Jan in your home having a good look round at the work being done "because it's fine until the taps are fitted" she would always say.

But that was Jan. Always honest. And if she liked you, she liked you. And if she didn't, well, she didn't – but that's probably because you weren't an animal lover.

Jan loved her dogs; we all knew the name of Jan's dog as she'd often be heard hollering, whistling, shouting and blowing her car horn whilst searching for her lost dog. It would return, trailing its lead, made of some random material - possibly even baler twine - Or was that her belt?

But like many of her fast-disappearing generation, Jan was both informed and conditioned by her immediate years following the end of the war. Consequently, throughout her life, she hated throwing anything away. She was ridiculously sentimental, even protective over



Eulogy to Jan Odey (contd)

innate objects, such as her leaking wellies, buckets with no handles, coats that were decades old, jumpers with more holes than a colander and her favourite battered jeans - held up by a knotted belt!

While Jan could be described as careful with her pennies, she was generous with her heart and generous with her time for others. While all the time you knew where you stood, and Jan certainly wasn't shy to give her opinion.

Jan was creative and innovative. And definitely not shy of doing what she believed was both sensible and practical. She'd cut a tree branch from the garden and decorate it for Christmas. Oh, and the same branch would do for the Easter tree.

Christmas was all about presents – Jan loved gathering all the wrapping paper and ribbons to reuse in the coming months. And Jan would keep old envelopes and birthday cards, cross her name out and re-use them. But all the while her present to you was thoughtfully wrapped, her creative streak ensuring a sprig of something from the garden was attached.

Jan was a lover of the countryside and all that it gave. From her youth, riding and hunting, she appreciated the simple things that nature provided. Whether that be produce from the garden or views from the Wolds.

How she loved a sunset, a crisp frosty morning, the stacks of bales in the harvest fields, and the wild flowers in roadside verges. She adored everything that the four seasons provided; snow drops, bluebells and daffodils were amongst her favourites. Of course, she loved gardens and gardening, birdlife and local wildlife.

This reminds me of dinner at the Kennels when Tor and I were asked there one summer's evening. There we were enjoying a delicious meal, with produce from the kitchen garden. We were chatting away when her cat breezed in. It settled beside us at the table and proceeded to eat its own dinner – a small rodent caught from the garden.

Tor was horrified. Jan ignored it and carried on eating and when the cat had finished Jan congratulated it before saying to Tor "aren't you hungry" seeing Tor had left half a plateful.

I have heard many stories over the last couple of weeks; I haven't been able to tell them all here today but what I can tell you is I did a small survey and asked a few people what words they thought best described Jan.

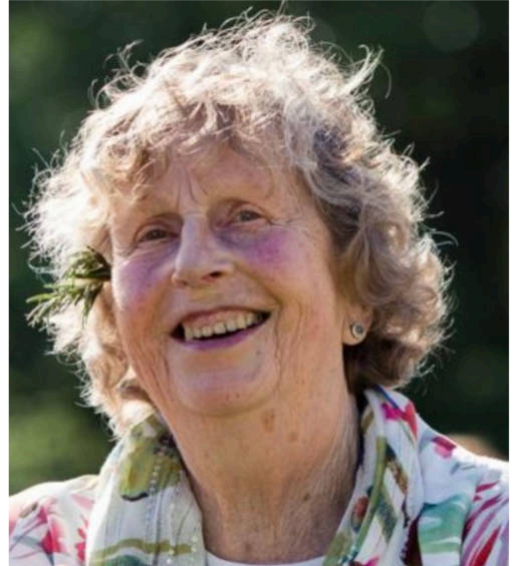
They included; Old school, genuine, eccentric, lovable, inquisitive, creative, feisty, kind, remarkable, and 'better than extraordinary'.

But I would especially like to end where I started and thank all of you for being Jan's friends.

She had many from near and far, her fellow worshippers and parishioners, the allotment family that meant so much to her, Jan's helpers / supporters / drivers and regular visitors, her team of men that did jobs for her, and the village of Hotham. You meant everything to her. I miss her dearly and I know from all the letters, messages, cards and kind words, that you'll miss her too.

She was one of kind

– God bless you Jan



On behalf of Village Link - our condolences to the Carver family on the sad loss of one of our great characters - we will all miss her.

Message from the Allotmenters for Jan Odey

Dear Jan...

... Just a few lines to say how sorry we are that you have left The Kennels. We will all miss popping in through the ever-open door for a chat or to bring a few flowers or veg, always to be offered a cup of tea or coffee and a slice of your Lemon Drizzle cake or something equally delicious you had made. We had to make sure that we had plenty of time to spare as we had to be prepared for a grilling of what we have been doing and how things were growing in the garden, before the subject turned to your memories of holidays abroad, seaside adventures with car loads of children etc. and the time when you had got the car loaded ready to go home only to realise that the dog was missing! Some time later, wandering up and down the beach, shouting for the dog, it came trotting up with one of Dick's ties still attached to its collar and the panic was over.

We had to be very careful not to turn up on a Saturday afternoon when the racing was on telly or we would get a flea in the ear! We all have our special memories of time spent in your company so we would just like to wish you "God Speed" to your final destination.

Love from the "Garden Army" – Mick, Roger, Steve, Wendy and Nige, Pam and Alan, Pauline, Margaret, Richard and all the other people I can't remember the names of.

Cheerio (for now)

P.S. A big thank you for your marvellous cat who has kept the gardens clear of rabbits etc. We have had a trouble-free year. Thank you, Milo. x



North Cave in Bloom

North Cave in Bloom would like to thank everyone involved in helping to continue to brighten up our village throughout 2024 and send our very Best Wishes for Christmas and the New Year to you all.

If you would like join our group or just to help with planting, our busiest time of the year is May when we prepare and plant up all the many planters around the village, so please get in touch by contacting Pauline 01430 424789, phornsey217@phornsey217.karoo.co.uk

On a personal note, we love this photo of Jan Odey with her allotment produce which one of our members took in early summer. Three words to describe Jan are kind, loyal and remarkable; a wonderful lady who will be greatly missed.





The Parish of All Saints North Cave: with St. John's North Cliffe and St. Oswald Hotham

Revd. Barry Worsdale - Tel: 01430 470716
email: bworsdale@hotmail.co.uk

REGULAR CHURCH SERVICES

All Saints Church North Cave:

11.00am each Sunday

St. John's Cliffe:

9.15am on the 1st and 3rd Sundays

St. Oswald, Hotham:

9.00am on the 2nd and 4th Sundays

Men's Curry and Quiz Night

Last Friday
of every month
in

ZOOM Café, South Cave
at 7.30pm

All men are welcome.

Come and enjoy the fellowship and a bit of competition in a quiz. We usually make up teams of 3, 4 or 5 depending on numbers.

Further details, please give me a call:

Revd. Barry Worsdale

01430 470716 or 07443 334391

CHRISTMAS CHURCH SERVICES:

All Saints Church North Cave

24th December 4pm Christingle Service

24th December 10pm Bethlehem Midnight Communion

25th December 11.00am Morning Service

St John's North Cliffe

15th December 6pm Carols by Candlelight

St Oswald Hotham

8th December 6pm Christingle and Carol Service

25th December 9.00am Christmas Service, bring your favourite gift.

VICAR'S GIGGLE:

Three sons left home, went out on their own and prospered. Getting together for Christmas, they discussed the gifts they were able to give their elderly mother.

The first said, "I built a big house for our mother.". The second said, "I sent her a Mercedes."

The third smiled and said, "I've got you both beat. You remember how mom enjoyed reading the Bible? And you know she can't see very well. So I sent her a remarkable parrot that recites the entire Bible. It took elders in the church 12 years to teach him. He's one of a

kind. Mom just has to name the chapter and verse, and the parrot recites it."

Soon thereafter, Mom sent out her letters of thanks:

"Dear Milton," she wrote one son, "The house you built is too huge. I live in only one room, but I have to keep the whole house clean!"

"Dear Gerald," she wrote to another, "I am too old to travel. I stay at home most of the time, so I rarely use the Mercedes."

"Dearest Donald," she wrote to her third son, "You have the good sense to know what your Mother likes. The chicken was Dee-licious!"

All Saints, North Cave Bell Ringers

In September we entered a band into the Beverley & District striking competition, which this year was hosted by All Saints, Roos. As this was a competition we had previously won, we were very keen to get our hands back onto the Albert Sellers Memorial Cup. The test piece we decided to ring was quite an unusual one, that of Eynesbury Bob Doubles, certainly never been rung in this competition before. So, after a great deal of practice and a quarter peal of it, we were all set. 98% of our test piece was some of our best competition ringing, which was commented on to us by other competing bands, but we had a slight method mistake which took us about 20 seconds to recover from. The result was that we finished second behind Market Weighton. What this does show however, is the progress the whole team has made over the years, not just the competition ringers but every one of the team.

October was the month of our annual fly away ringing trip, this year we travelled to Guernsey, flying from East Midlands we had arranged to ring at Kegworth before our flight. Once on the island we had four full days of ringing and sight seeing with all towers being pre-booked in advance by Andy Rignal, well done Andy. It certainly was a good mix of bells, from the heavy eight bells in St Peters Port a simulator ring of ten bells and a mini ring at Elizabeth College, some lovely village churches to a ring of just three bells which I have to say were very challenging, with one of the bells being the oldest bell on Guernsey. It is worth pointing out that at Elizabeth College they have bell ringing on the curriculum and it is used to feed ringers to St Peters Port, the facilities they have at college speeds the training of a recruit up by about four weeks before they can join the Sunday band, I was told. We scored one quarter peal on the island out of two attempts, with one crashing out!

At the end of October, we held our first Teddy Bears Picnic at the church, this included bringing your own much-loved teddy so that it could zip down a wire from off the top of our 65ft tower, we had no refusals, and I can assure you that no teddys were harmed! Within the church we had, name the teddy, a

teddy bear hunt, tombola, brass rubbings, refreshments and tower tours. When you put on an event like this obviously you have no idea if anyone will turn up, but people did, thank you, you all helped to raise £300 which will cover the cost of some structural drawings that we need to have produced for our new



bells.

On the evening of the Teddy Bears Picnic was a Race Night at the Club for the Play Area and I was stunned when Simon Taylor presented me with £100 towards our fund on behalf of the Club. Thank you!!

Having won the Joan Castle Cup two years ago which is awarded to the tower that rings the most quarter peals in a year, we took a back seat last year, it really is a big commitment for any band, but ringing long lengths does improve the standard of our ringing and binds the team together. So, we are back on it again this year and as usual it is Escrick who are keeping us honest. Escrick have taken the award something like 12 times in the past 13 years. So as I write, totals to date are: North Cave with 37 quarter peals and Escrick with 36, with only a few weeks to go.

Our training school, The East Riding School of Bell Ringing, has again had a busy year with seven full day workshops and a few four-hour

All Saints, North Cave Bell Ringers (contd)

sessions too. We share these between us and our second Ringing Centre at Bubwith. From January 2025 we shall be adding a third Ringing Centre at Holme-on-Spalding-Moor - this will give us the opportunity to ring longer sessions on fully open bells and not using the simulators that we have at North Cave and Bubwith. We have just held our final workshop of the year at North Cave, which attracted twenty-four ringers with some travelling down from North Yorkshire.

Our £55K project and fund-raising, to augment our existing six bells to eight, continues at a pace. The bell hangers have been booked for September 2025, which means that our two new bells will have to be cast in June/July 2025 at Taylors in Loughborough. We shall be taking a coach down from the village to see the castings take place, a chance in a lifetime trip. Further information shall be circulated nearer the time. The faculty for this work has now been approved by the Diocese of York and our architect, the next box to be ticked is with our structural engineer for some detailed

drawings of how the new steelwork will be sat/ fixed into the tower walls. Funding-wise, with pledges and grants, we are 50% to towards our £55K target, now we are at this level other funding streams become available to us.

Should any individual or organisation consider donating to this project please contact me. We have many sponsorship packages available, from paying for a foot of bell rope to some of the larger engineering aspects of this scheme.

Thank you all for your continued support and especially to the kind comments we receive from the Community Facebook. It means a lot to us.

Simon Plows

Ringing master

Mobile: 07841 052219

Email: simonplows@gmail.com

Carol Singing & Christmas Festivities North Cave Village Green



Free Community Event

To include mince pies and mulled wine

Friday 20th December from 6.30pm

Supported by NC Bellringers, NC Church, NC WI, NCFG,

NC Playing Fields, Sports and Social Club

With music by Angie Brown

A poster for a performance by Cave Players. The background is yellow with a red ribbon across the middle. The text is in various fonts and colors. At the bottom, there are illustrations of sewing tools like scissors, buttons, and a thimble.

Cave Players
present
THE KING'S NEW CLOTHES
Re-imagined by Sharon Wood,
from an original script by C. E. D. Westron.

25th Jan to 1st Feb 2025
North Cave Village Hall
2pm or 7pm

www.caveplayers.co.uk
or 07553 897988

Children £6
Adults £9

Our charities this year are Dove House Hospice and Hunsley Singers;
In memory of our beloved former member, Jeanne Davison.

North Cave Parish Council News

Christmas Tree: The village tree will be going up ready to light up on Sunday 1st December at 15:30. Thank you to all involved with making this happen every year.

Maintenance: Parish Councillors continually monitor the village and thank you those who report village concerns to us. Upcoming projects will be the repair of the Bus Shelter on Station Road and the repair of Mill Lane footbridge. The War Memorial is to be restored once funding is established and Millennium Walk will start a new management plan in 2025. It is wonderful to see Blanshards Lane has finally had the work promised by ERYC.



Dog Fouling: Is a constant concern for the Councillors and enormous gratitude goes to all involved in keeping the village foul-free. Another dog bin has been put up off Fountains Way.



May we take this opportunity to wish you and your household a Merry Christmas & Happy New Year!

Our next Parish Council meeting is on 14th January 2025

(there is no meeting December 2024)

Contact us via our **email: clerk@northcave-pc.gov.uk** or visit our website for news & further information: **www.northcave-pc.gov.uk** or call the Clerk: Naomi Wright 01430 425374

North Cave Parish Councillors are all volunteers who want to try to improve the community we live in, spending many hours of their time trying to achieve this as well as attending the monthly public meetings. We hold our meetings in the Village Hall, Westgate, every 3rd Tuesday of the month commencing at 7pm, there is an opportunity for you to have your say during the public forum prior to the full council meeting.

Do you see irresponsible dog owners walk on after their dog has fouled?

Stop them damaging your reputation and report them to us in confidence:

Dog Warden Service

www.eastriding.gov.uk/dogs

dog.warden@eastriding.gov.uk

(01482) 396301

Where possible please tell us:

LOCATION OF FOULING

TIME AND DATE OF THE FOULING

NAME AND ADDRESS OF DOG OWNER

DESCRIPTION OF THE DOG/OWNER

To request removal of dog faeces on the street please call (01482) 393939

Humberside Police

Non emergencies use 101

Your neighbourhood Policing Team are available to offer advice on crime prevention and to listen and gather information on problems that you may be having in your area. If residents are unable to ring we are also able to visit your home for help and advice. Please note that the Police can now issue dog-fouling tickets.

Many Thanks, Howden Policing Team

Everthorpe Forum



In October 2024, North Cave Parish Council and the East Riding of Yorkshire Council signed the lease on the quarter acre Everthorpe Community Orchard on the south side of Low Road. There is now a twenty five year lease in place for the Orchard to become a community space for Everthorpe and North Cave residents alike. Thanks to North Cave Parish Council for covering the peppercorn rent on the orchard and the charges for the lease paperwork with the legal department of ERYC.

All the fruit trees have been identified and there is a plan in place for work to be done in the Orchard - please see the illustration.

Work parties have already taken place and a great deal of clearance has been done, grass cut, brambles removed, elders cut down etc. Two new gateposts have been put in and there is hedging and fencing to be done, the stone wall to be repaired and extended, picnic tables and benches with disabled access to be put in, a wildflower area to be planted, a living willow structure to be started and in due course there may be a shed with solar power and a composting toilet.

At the moment work parties are taking place from 9.30 a.m. on Saturday mornings. All are welcome to come and help out.

Generous donations from the Bingo Night at North Cave Village Hall run by Jill Marwood have been made and donations in kind from other sources in terms of fencing and hedging plants (from Everthorpe residents, The Woodland Trust and Marjoram's Nursery) have been promised. Grants will be applied for in due course so that we can make the Orchard a real centre for community events and get-togethers, which means we will no longer have to hold these on the green at the other end of the village, surrounded by roads and traffic.



▼ Photographs illustrate examples of the work done to date





BIRCH HOUSE BEAUTY

Finkle Street, North Cave

Nails
Waxing
Massage
Lashes
Brows

Evening and Weekend Appointments Available

Gift Vouchers Available

Facebook/Instagram - Birch House Beauty

Telephone - 07841052211

BELGRAVE COTTAGE 🏡 Filey

Self catering cottage on the beautiful East Coast

◊ 😊 ◊ 😊 ◊ 😊 ◊ 😊 ◊ 😊 ◊ 😊 ◊ 😊 ◊ 😊 ◊ 😊 ◊ 😊 ◊

Available all year for short - long breaks -
last minute escapes and holiday vouchers for
Birthdays, Christmas & Anniversaries!!!

For availability contact 07535 633818
Photos on Facebook (Belgrave Cottage)

Give it a try...you won't be disappointed!!



Simon Tomlinson
Director



M: 07954 990203

E: stdpropertyservices@btinternet.com

Property Maintenance
Refurbishments
Kitchen Fitting
New Build Projects
External Hard Landscape

84 Westgate
North Cave
HU15 2NJ

Westgate
North Cave
HU15



Home cooked meats and cakes - All Day Breakfasts
Telephone orders welcome call: 07415094005

Well behaved dogs on leads welcome.

Wheelchair accessible - Indoor and Garden Seating

High chair available - Card or Cash Payments

Open: Monday to Friday 8.30 am until 3.30 pm
Saturdays 9am until 2pm : Sundays closed

Quiz in Aid of Kidney Research



Margaret Sutherland & Nicky Sugdon would like to thank everyone who supported the recent Quiz Night to raise funds for Kidney Research UK. Over 60 adults and some children attended the event in North Cave Village Hall.

There were 15 prizes to be won on the raffle and Jackie North did a wonderful job of selling the tickets. Barry Worsdale, the

vicar, as always, did an amazing job as the Quiz Master.

The evening was thoroughly enjoyed by all with the winning team being The Bell Ringers.

Kidney Research UK sent *"A Big Thank you to Everyone who very kindly supported our charity raising over £600"*



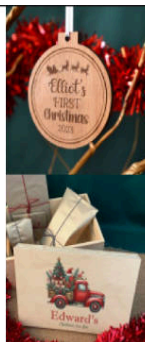
Personalised Christmas

We have a huge range of Christmas stockings, baubles, sacks, Christmas Eve boxes, pyjamas, and more!
All products are personalised especially for you.

SHOP NOW AT

www.personalisedxmas.co.uk

use discount code VL10 for 10% off



IT'S A FUNNY OLD WORLD

...and on the odd occasion our wildlife comes to you for a leg up the ladder of life; and so it was one August morning, when the daily offering had been strewn on the lawn and immediately pounced on by a horde of squabbling starlings, that this small brown bird came bustling round the end of the plant table under the veranda, peering here and there and not a bit afraid of the humans watching the feeding frenzy!



"Hello, are you hungry?" said I and was answered with a definite "Chirrup". Reaching into the tub of mealworms, crunching them up in my hand and talking to him all the time, every sentence was answered with the same "Chirrup" hopping about waiting for the food, he soon had them hoovered up, finishing with a drink of water from the plant saucer near the raised bed and flying off into the shrubbery.

He was back a couple of hours later for a top-up and that's how Syd Startling became a regular visitor. It was obvious that he was the last out of the nest, small and out-competed by his siblings, we were his adopted family. Every day you could see a few more speckles coming through on his chest. After a couple of weeks, he missed a day and we assumed he had flown off with the flock as, despite our calls of "Where are you Syd", no Syd appeared. The following afternoon Nige came in and said "Syd's back but he doesn't look very well" and, when I went outside, there he was, perched on the water dish, head bent, eyes closed and his little chest heaving up and down. "Oh no! not bird flu" was my first reaction. He didn't fly off when I went up to him, talking and stroking his back. Syd died three hours later and, when I picked him up, I found an open wound on the left side of his breast. "Sparrowhawk"! and through a veil of tears I buried him under the apple tree.

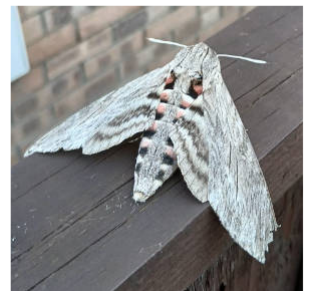


On a lighter note, I am going to tell you the tale of a hungry caterpillar:- It all happened one hot afternoon in late August, Reeta was passing by with Bonnie, the dog, "Oh Wend, I've got a photo on my phone to show you, it's

a great, big, green caterpillar and its eaten half the leaves on one of Colin's bushes, he's furious, he's been waiting for it to flower for two years! He put it in the brown bin a couple of days ago but it's still alive as we lift it up when we put more stuff in" "It sounds like one of the hawk moths" I said. "I'll get my book out and pop round when you get back home"

Lifting the lid I could see this finger-length, plump, yellowish-green caterpillar and, picking it up, I could see the dots down its side and the horn on its rear-end, matched the picture of the Poplar Hawk Moth. Colin was stood by his half-eaten bush "What do you want to do with it?" I ask. "If you put it in the bin, it will be crushed today when the bin lorry comes or, if you're very kind-hearted, we can put it back in the bush and it will go underground to pupate"

"Oh, ok, put it back on the bush" says he and within a few minutes of putting it back it was munching away. They both kept popping out to see if it was still there but, the following day, it had gone. Some two weeks later, their next-door neighbour showed them a photo of a very large, brown moth on her white washing with a clothes-peg at the side, for comparison. "I thought it was a bat a first, we've caught it in a clear screw-top jar to look at it and took a video of it as it fluttered about". Reeta took a photo on her phone to show me and, by its markings and its pretty furry face and big eyes, we were sure it was a Poplar Hawkmoth. Both Reeta and Colin were glad they saved the caterpillar and that it would eventually change into a big, beautiful moth – and the bush survived! Win, win.



*Cheerio
Wendy
October 2024*



NEWS FROM MIRES BECK NURSERY



WILDFLOWERS.....

At the HUMBER BRIDGE COUNTRY PARK, volunteers have planted 26 different varieties of Mires Beck wildflowers - over four and a half thousand plants in total. The newly planted wildflower meadows will nurture vibrant bee and butterfly populations, while also creating habitats for birds and hedgehogs for years to come.

Meanwhile, over at RHS HARLOW CARR in Harrogate, a wildflower meadow has been created with 600 of our plants, and they've pre-ordered another SIX THOUSAND for next year. Supplying the RHS is a huge feather in our cap, so well done to Wildflower Supervisor Lizzie and her team. Next year, we aim to be included on the RHS register of peat free nurseries.

..... AND TREES

In addition to preparing and growing next year's perennials and herbs for our wholesale customers, we're busy with trees. We currently have around 300,000 to sell, and it's

been an amazing start to the season, with sales and pre-orders of more than 80,000. We're the leading supplier to the Humber Forest, and we're delivering trees to other Community Forests as far apart as Durham, Wolverhampton and Plymouth. Great work Tree Team Leader Andy and his group of dedicated service users.

A HUGE "THANK YOU" TO STIHL

Leading power tool company STIHL have donated a chainsaw and the relevant safety clothing to the nursery. It's an amazing gesture and greatly appreciated by our Estate Team, who will now be able to fell trees themselves as part of our woodland management programme. It will also save us money having to bring in tree surgeons to do the work. When we fell trees, the wood is used in the glasshouse wood burners to keep our service users warm during the winter months.

FINALLY

Everyone at Mires Beck wishes you a very merry Christmas and a happy new year.

Support Ladies of our village who will be collecting for children aged 0 - 16 years
On Sunday 1st December
10am and 1pm

MISSION CHRISTMAS cash for kids

Outside North Cave Village Hall

NOTE: If you miss the collection day, you can always drop your gift off at B&M stores.

HAWLEYS

AUCTIONEERS & VALUERS

Single items to full homes cleared Valuations given for insurance, probate and sale

Albion House, Westgate, North Cave, HU15 2NJ Contact John or Caroline Hawley - 01482 868193 Mobiles: John 07850 225805 Caroline 07980 624583

[email: info@hawleys.info](mailto:info@hawleys.info) www.hawleys.info

Nordham Cottages

www.nordhamcottages.co.uk

Seven cottages in Nordham and Hotham: Visit England approved, 4, 4* GOLD and 5* GOLD Offering accommodation for 2 to 6 guests:

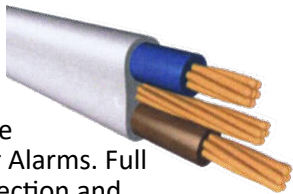
Apple Loft, Bay Tree Cottage, The Hideaway, Horseshoe Cottage, Bakers Cottage, and Ruth's Cottage.

NEW: The Old Stables, 5*GOLD is accessible to all, with 2 ensuite bedrooms.

Reservations taken for weekends/ midweek/ weekly stays, and monthly lets.

For more information, contact Louise Martin 07951745033/ louisem200@hotmail.co.uk

D.A. GILES (ELECTRICAL) LTD.



New builds, Re-wires, Fire and Intruder Alarms. Full testing, inspection and certification. New consumer unit (fuse board). CCTV. Large or small - we cover them all.

Free quotations:

Tel: 01430 470842
Mb: 07778 644002
Mb: 07825 092868



ACCOUNTANCY SERVICES

Focus on what you do best and let us take care of the distractions. We specialise in supporting small businesses and can help with:

- Self Assessment Tax Returns
- Bookkeeping & VAT
- Business Accounts
- Payroll & RTI
- Corporation Tax
- ...and much more

We are based in Beverley and North Cave and cover all surrounding areas. To arrange your free, no obligation, meeting call us today on 01482 235363 or visit us online at www.taxassist.co.uk/beverley.



Chimney Sweep



- Chimneys Swept from £40 • Log Burner Servicing & Repairs •
- HETAS approved sweep •
- HETAS registered installer of Log Burners, Multi-Fuel Stoves & Chimney Liners •

Paul Dobson Tel: 07961 708669

Email: crosssolutions@yahoo.co.uk

17 Springfield Avenue, Brough, HU15 1BU

School Visits

Earlier this term, the children in Class 3 and Class 4 visited Burton Constable as part of their work studying the Tudors. During the visit, the children toured the house, looked at some Tudor clothing and tried to identify Tudor items, from cutlery to toys. The children had a brilliant day and were once again great ambassadors for our school.

Links with the Church

In October, we enjoyed attending All Saints Church for our Harvest Festival. The service was led by the children and was well supported by families and friends. We are grateful for all of the donations we received prior to the service that were donated for Hull Foodbank.

We look forward to our Christmas service later in December!



School Sport and Extra-Curricular Activities

It has been a busy term for school sport and extra curricular activities! We provide a range of clubs for our children to access free of charge and these have proved popular. This term, the children have been able to attend clubs such as running club, book club, multi-skills club, Jesus and me and a craft club.

This half term we have invested in over £1500 of new playground equipment that has really brought our playground to life! Thank you to the Friends of the School for generously funding this.

In addition to our clubs, we have also attended a range of inter school sporting competitions, including benchball, cross country, football and Penathlon bowling.

New Starters September 2025

We enjoyed meeting so many prospective families at our open event for new starters in October. We are extremely proud of our school and our provision. If you were unable to attend and would like to tour the school, please contact the school office. We would be delighted to show you around and answer any questions that you may have.

'The vision is at the heart of curriculum development in this school. As a result, the school's curriculum encourages every pupil, including the most vulnerable, to achieve their goals. It empowers them to do so through constant and committed care and support.'

(SIAMS Report 2024)



North Cave Sports and Social Club

The Club and Bar is open as follows: Saturday and Sunday from 12 noon
Bingo on Sunday from 8pm
New members welcome: £10/year
Bookings: Linda Gray Mb 07955 475575
Membership: Joyce Smith Tel: 01430 423541 / Mb 07840 165114



FIREWORKS

North Cave Playing Fields Association would like to thank everyone for supporting the Fireworks event - making it such a success, and for helping to make tidying up so much easier by using the waste bins provided. All the proceeds from this event helps towards the maintenance costs for the Clubhouse, Play Area and Playing Field.

NCPFA continues to invest in the facilities - decoration and refurbishment of the changing rooms and new flooring in the Clubhouse is scheduled. Long term, better provision is needed to accommodate the increased number of teams using the field and to provide both male and female changing facilities.

Costs continue to rise so every penny helps towards the provision and maintenance of all the equipment needed to maintain the playing field and play area.

As you will see in the Cricket Club report, the cricket square has had a lot of work done. This included coring and removal of the build-

up of organic material. This material has now been stored on a less used area of the playing field to allow it to compost down, after which it will be used to help rejuvenate the area so that it can be used as a playing surface again.

In addition we continue to seek funding for a new and improved play area. This is not a quick process! Funders like to see that a community is trying to help itself, so it is very beneficial if we can show support through donations. Volunteers' time will count but if we can show 'hard cash' in the pot it is even better. Thank you to all those who have already contributed. More please! Scan the



QR code follow the link to go to NCPFA Localgiving fundraising page - <https://localgiving.org/north-cave-playing-field-association>

How else can you help?

Are you a Dog Walker? - As well as continuing to pick up after your dog (*Thank You*); please consider making a donation of £20 per year to help towards the maintenance of the area.

Join the Club - even if you are not particularly sporty, you will receive a welcome and be able to make use of the Bar, Patio and facilities.

Continue to support the events!

The Club and Patio is open at weekends from 12 noon - rugs are available if you would like to sit outside and are feeling a bit chilly - just ask!

YULETIDE ROMP

A 3-mile walk between Christmas and the New Year - starting and ending at the Clubhouse, with soup and drinks. Watch social media for further details.

Details of any other events will be posted on Facebook or in the Club.



North Cave Coal Exporters Cricket Club

Here's the latest from North Cave Coal Exporters CC, as our cricketers look back on a successful 2024, make major ground

improvements and look ahead to 2025.

Presentation Evening

In October we celebrated a fantastic first year for the North Cave Coal Exporters in North Cave, reflecting on successful seasons for the first and second teams, midweek team and our junior section at our Annual Presentation Evening at the North Cave Social Club.

We recognised some superb individual performances and achievements through the season, including James Barker, who secured awards for First Team Player of the Year and Best Batting Performance, Dave Barker, winner of Best Batting Average, Andy Kingston, who won Best Bowling Performance, and Best Bowling Average winner Andy Reeves.

Also recognised were Ted Burrell, who won the Midweek Batting Average award, and Most Improved Player, Sophie Goode, winner of Best Midweek Bowling Average, James Rounding, our Most Consistent Player of 2024, and Second Team Player of the Year Raj Roy.

We'd like to give special thanks to Keith and Linda for their support with the event, and also to club sponsor Voujon Indian Restaurant & Takeaway, who catered the evening with a delicious hot buffet.

What's next?

The cricket season may be over but that doesn't mean that the club's work ends...

The autumn has been a really important time for our Grounds Maintenance, who took the opportunity to organise urgent improvement of the cricket square. Cricket had not been played at North Cave for four years prior to the formation of North Cave Coal Exporters, making it difficult to produce cricket pitches with the pace, carry and consistency we would hope for in 2024.

After drafting in expert advice, NCCE agreed to invest a significant sum of money to get the grass on the square stripped, the soil properly aerated, leveled and then reseeded. As you can see from the photos the renovated square is looking really good, with a new covering of



grass coming through nicely. We are confident the new-look square will play really well in the 2025 season.

The end of the 2024 season was also time for the club to take stock and review its development plan. The main deliverables for 2025 and beyond are...

- To recruit and develop new players and coaches
- Arrange and embed regular weekly practice sessions during the season
- Continue to build the working relationship with the NCPFT grounds maintenance team
- Develop relationships with new and existing sponsors
- Increase our number and junior teams
- Support junior cricket at North Cave Primary school

How you can get involved

As you can see from the above, we have lots of work to do to continue to progress the club and support the development of cricket in North Cave.

Whether you're interested in finance, communications, grounds maintenance, coaching or playing cricket, there are lots of opportunities for volunteers to make a contribution to the club's future. Formal grounds maintenance and coaching qualifications are available, paid for by the club, for the right volunteers.

If you'd like to find out more please email:

andyswallow17@gmail.com

Hearing loss?
Ear ache?
Blocked ears?

It could just be *wax*

We can help with that & more...
Book a 30 minute ear & hearing
health check-up today

in partnership with the award-winning
TympaHealth system

A Beauty Lounge

is now offering
NEW

Ear & Hearing Health check-ups
& Ear wax removal using
Microsuction

Call Alla on: 07878786952

1 Orchard View, Church Street North Cave

Curlaway

Unisex Hair Salon

1 Orchard View,
Church Street,
North Cave

TELEPHONE

01430 423712

07432 849406

Incorporating
Beauty and Feet Therapist -
Alla

"A Beauty Lounge"

 QUALIFIED
TEACHER



KS3 SCIENCE
GCSE SCIENCES
A LEVEL PHYSICS



MARTIN SPURGIN

SCIENCE TUITION

07375 681 034

martin.spurgin@gmail.com

HU15, East Yorkshire



£25 / HR

FLEXIBLE SCHEDULING

- Drying
- Brushing
- Dog Clipping & Scissor Finishing
- Ears Cleaned
- Nail Trimming
- Puppy Grooming



PAMPERED PUPS
... DOG GROOMING ...

01430 470027

24 Westgate, North Cave, Brough HU15 2NJ

www.pamperedpupsgrooming.co.uk



+ Reflexology + Reiki + Hopi Ear Candling + Indian Head Massage
Mobile or Clinic in: The Old Estate Office, Fox Farm Complex
Drewton Estate, Drewton, South Cave HU15 2AG www.walkingonairtherapies.co.uk

Email: claire@walkingonairtherapies.co.uk

Tel: 07789 595496



ASSOCIATION OF
REFLEXOLOGISTS



Open for the sale of
superb quality
perennials, herbs and
Yorkshire provenance
wildflowers.

Opening hours:

March – September 10 till 4 every day

October – February 10 till 4 Mon-Fri

Low Mill Lane, North Cave

01430 421543 www.miresbeck.co.uk

www.miresbeck.co.uk



The Queen's Award
for Voluntary Service
The 2015 to 2016 project



As we come to the end of 2024, there is certainly a lot to look back on in what has

been a busy year for the WI.

Last month the WI celebrated 70 years of "Keep Britain Tidy". Founded in 1954, this in one of the most enduring WI successes! November's campaign was also to "Buy Nothing New" month. This encourages everyone to save pennies and protect the planet. Every new item has an environmental price tag so we want to make the most of the stuff we already own thereby cutting our carbon footprint.

The War Memorial for Remembrance Day looked wonderful. Thank you to all the people involved in making poppies to create this display for such an important occasion.



We are always ready to Welcome In newcomers to our events and activities. These include:

WI Café on Mondays between 12 and 2.30pm. If you've not already been come and give it a try.



There are lots of delicious things to have for lunch: soups, quiches, salad, sandwiches, cakes and

puddings (many homemade) as well as the opportunity to meet and chat to other people. A huge big thank you goes to ALL the

volunteers who help make this extremely successful.

Walking Netball continues to be popular. If you fancy coming back to the game, our sessions are on Tuesday between 11am and 12pm at



South Cave Sports Centre. All abilities welcome. As well as being great fun and exercise, we have just entered the East Riding Walking Netball League and have won both of our matches so far.

Fancy a short walk of 2-3 miles on a Thursday morning between 10.30 and 12.30?



Then come and join us.

Any new members are always welcome. Our walks take us around the local area, great for anyone who has just moved here, and end up eating at one of the local cafes/pubs.

Are you interested in reading? Do you fancy a change from your normal choice of author? If so, come and **join us at the Book Club**. We meet every 4-5 weeks on a Thursday at 7.45pm at the White Hart Inn.

As you can see, there is a lot going on and plenty to get involved with.

We would like to take this opportunity to wish you all a very **Merry Christmas and a Happy New Year**.

Our first meeting in 2025 is the 9th January. See you there!

Anne Falconer
North Cave WI

Directory Of Organisations And Events

CATHOLIC CHURCH: Our Lady of Perpetual Help, Sancton Road, Market Weighton. Mass Saturday 5.30 pm & Sunday 10.30 am. Holy Day Mass 7.00 pm. Weekdays Mass as announced. Fr. David Standen tel. 01430 873202 or email stmarystjohn@rcdmidd.org.uk
website: www.stmarystjohn.org.uk

CHURCH OF ENGLAND - ALL SAINTS NORTH CAVE, ST. OSWALD HOTHAM, ST JOHNS NORTH CLIFF: Contact details for Priest in Charge: The Rev. Barry Worsdale, The Vicarage, Church Lane, North Cave HU15 2GJ Tel: 01430 470716 email: bworsdale@hotmail.co.uk

NORTH CAVE WOMEN'S INSTITUTE: meets in the Village Hall on the **FIRST** Thursday of each month at 7.30pm. There is a varied programme of speakers, demonstrations etc attended by approx. 30 members. A warm welcome is offered to any ladies who would like to join. For information contact Michelle Simpson 07870 661259 or email northcavewi@eastyorkshirewi.org.uk

EAST RIDING CHILDREN'S CENTRE: Monday 9.00am until 3.30pm, Tuesday 9.00am until 5.00pm and Wednesday 9.00am until 2.30pm. For more information and to register, call Lisa Howell (family support worker) on 01482 669474

NORTH CAVE PRE-SCHOOL: VILLAGE HALL: Open Monday - Friday (term time) 9.00am - 3.00pm plus 'lunch clubs' and 'rising fives' sessions. From age 2½. Contact: Julie Tooke, tel. 01430 441547 / 07968 239303

NORTH CAVE VILLAGE HALL: Westgate, available for all kinds of functions. All enquiries to the Booking Secretary: Eva Dayes 01430 423111

HOTHAM VILLAGE HALL: Newly refurbished with excellent facilities - available for all kinds of functions. All enquiries to the Booking Clerk Mrs. Pam Johnson, tel. 01430 425285; or Freda Brocklesby, tel. 01430 421095 email: brocklesby678@btinternet.com

NORTH CAVE PLAYING FIELDS ASSOCIATION: (includes the Play Area). Registered Charity No 523277. Contact Hon. Sec. John Backhouse. e-mail northcaveplayingfields@gmail.com

NORTH CAVE SPORTS AND SOCIAL CLUB: The Pavilion, The Playing Fields, North Cave. Small friendly club. Bookings and Membership £10 - contact J Smith 01430 423541 / Mb 07840165114. All profits go to the Playing Fields and Play Area. General queries contact Hon. Sec. John Backhouse. e-mail northcavesportsandsocial@gmail.com

NORTH CAVE FOOTBALL CLUB: Two adult football teams, new players welcome. Contact Hon. Sec. John Brattan Mb: 07836 315609

NORTH CAVE COAL EXPORTERS CRICKET CLUB: Please see the article in the Dec 2023 issue about the return of cricket to North Cave Playing Fields.
Contact NorthCaveCoalies@gmail.com or call 07938 724151 for more information.

EAST YORKSHIRE CANOE CLUB: Sessions every Saturday morning, South Ings Lane, Newport Road, North Cave. Beginners welcome. Contact Charles McCaffrey Tel. 01482 867754 or 07813042417 or info@eycc.org For more information see the website: www.eycc.org

NORTH CAVE INDOOR BOWLS: Townend Lane, North Cave, tel. 01430 421378. Open 10.30am to 10.30pm in Winter, from early September until the end of April.

CAVE PLAYERS: Amateur Drama Group. Rehearsals take place in South Cave at the WI Hall and performances take place in North Cave Village Hall. More Information Contact: Chair, Sharon 01482 840404 or Sec. Neil, 01430 424497.

Directory Of Organisations And Events

For tickets, contact Malcolm 01430 422073 or visit www.caveplayers.co.uk

DENTIST: Church Street, South Cave. Weekdays 9am to 6pm. Saturdays 9.15am to 12 noon. By appointment, tel. 01430 423826

OPTICIAN: John Tomlinson based in North Newbald. Tel. 0800 9775994

SOUTH CAVE SCOUTS: Beavers: 6-8s, Cubs: 8-10½s, Scouts: 10½-14s, Explorer Scouts: 14-18s. If To add a name to the Group's waiting list email: southcavescoutingmembership@gmail.com. Anyone with a general enquiry should contact Claire Moverley, Assistant Group Scout Leader on 07803247324.

RAINBOWS, BROWNIES AND GUIDES: 01430 421504 or <https://www.girlguiding.org.uk>

EAST RIDING CARERS' SUPPORT SERVICE: tel. 0800 9176844

MEDIBUS: Door to door service to Beverley, Cottingham, Hull Royal, Goole and Scunthorpe Hospitals from your front door. tel. 03456 445959 (charged at local rate).

DOCTORS' SURGERIES:

South Cave:

Emergencies and Enquiries	424764
Appointments	422206
Repeat prescriptions	422495

Gilberdyke:

Emergencies and Enquiries	440225
Appointments	440225
Repeat prescriptions	440225

MOBILE LIBRARY: Tel. 01482 392749 or check online <https://www.eastridinglibraries.co.uk>

North Cave:

Wednesday - every 4 wks from 24 May 2023; outside 30 Newport Road 10.05- 10.20

Thursday - every 4 wks from 17 Aug 2023; outside 19 Nordham 15.15 - 16.15

POST OFFICE: At Londis Cave News, Church Street, Weekdays 6am - 8pm, Weekends 7am - 8pm

POLICE: For non-emergency calls contact your Local Policing Team, tel. 101 (24-7), or e-mail

Police Community Support Officers:

PS Keith Robinson email keith.robinson@humberside.pnn.police.uk

PC Jack Dominic email jack.dominic@humberside.pnn.police.uk

PCSO Phoebe Buttle email phoebe.buttle@humberside.pnn.police.uk

BELL-RINGING: Join us at All Saints' church on practice night Tuesdays from 7:30-9pm or before Sunday morning service from 10:30-11, or contact Bill on 470868 for more details.

ANTI-SOCIAL BEHAVIOUR: (Environmental Services)

Noise etc. S Shuttleworth, tel. 01482 396203, out of office hours tel. 01482 393939

YOUR LOCAL COUNTY COUNCILLORS:

Victoria Aitken (NCave) tel. 07721 411620 | Nigel Wilkinson (Eastrington) tel. 07717 364525

Linda Bayram (NCave) 07956 310720 linda@cbayram.karoo.co.uk

NORTH CAVE PARISH COUNCIL: Contact the Clerk: Naomi Wright 22 Beck Road North Cave HU15 2JH Tel: 01430 425374 Email: clerknorthcavepc@hotmail.co.uk Hours: Mon, Tues, Thurs, Fri 13.30-17.30

NORTH CAVE FLOOD WARDEN: Mr Stephen Thackeray, 1 Blanshards Lane Mb 07967 165337

CAVES U3A: Speakers meetings at Cave Castle on the first Monday in the month at 2pm except on Bank holidays when it is deferred for a week. Contact Sec. Bernice Maitland. Tel. 01430 421960

Local Businesses - Use them or lose them

Business/Service	Name	Address	Telephone Number
Accommodation for visitors	Nordham Cottages	9 and 11 Nordham, North Cave	07951 745033 / 01430 422266
Accommodation for visitors	Belgrave Cottage, Filey	Belgrave Farm, North Cave	07535 633818
Accommodation for visitors	Bennys Cottage	21A Nordham, North Cave	0787336348 / 07848951730
Accountancy	TaxAssist Accountants	12 Westgate, North Cave	01482 235363
Aerial / Satellite /Icd installations	Chris Chapman	Westgate, North Cave	07739 583300 / 01482 342944
Auctioneer and Valuers	Hawley Auctioneer and Valuers	Albion House, Westgate	01482 868193
Bespoke Tailor and Shirtmaker	Robert James	36 Main Street, Hotham	01430 425435
Boarding Cattery	The Cat's Cradle (Vicky Herd)	Cavewood Farm Common Lane	01430 425554
Boarding Cattery	The Mews Cattery	Market Weighton Road	01430 422605
Boarding Cattery	Evergreen (Sarah Page)	6 Station Road	01430 421975
BP Service Station 7am-10 pm	Triangle Garage	Newport Road	01430 424119
Builder and Joiner	Gav Lewis	2 Fairfield	07904 091038 / 01430 424479
Building Contractors	Greenwood and Ford	Low Road, Everthorpe	01430 423831
Café and Deli	The Old Bank Café and Deli	Westgate, North Cave	07415 094005
Canvas prints from your images	Tony Roach FineArtCave	Common Lane	01430 423063
Carpet & Hardfloor Cleaning	Excellence Floorcare (Mark)	23 Newport Road, North Cave	07919 103138
Childcare	Wildflowers childminder	North Cave	07903 870865
Chimney Sweep	Paul Dobson, Cross Solutions	17 Springfield Avenue, Brough	07961 708669
Chiropractor	Cave Chiro, Louise Marshman	Westcote Fold, S. Cave, HU15 2GU	01757 700500
Clinical hypnotherapist	Susan Dukes NIPCH	3 Westgate	01430 425450
Computer services repairs sales	Daniel's Laptops	Newport Road	01430 421014
Creative exteriors and Fascias	Lee Garton	6 Westgate	01430 421268
Dog Grooming	Posh Paws	North Cave	01430 422605
Dog Grooming	Pampered Pups	Westgate	01430 470027
Dog Grooming	Doggie Style	16 Newport Road North Cave	07834 225531
Driving School	North Cave School of Motoring	34 Beck Road, Everthorpe	01430 421944
Electrical Appliances	Steve Giles		07578 878007
Electrical Contractor	David Miles	Denmark Rise, North Cave	07778 644002 / 07825 092868
Electrical Goods - Repairs	Nigel Cundill	-	07962 467111
Electrician - Domestic	J B Electrical Services	38 Beck Road, Everthorpe HU15 2JH	07983 991316 / 01430 423291
Electrical Services	Gary Malton	gary.malton@icloud.com	07399 481550
Equestrian Bedding	T Harrison	21 Newport Road	01430 422560
Equestrian Outlet	Haggerstons	Newport Road	01430 626118
Estate Agents	Chris Clubleby and Co	Skillings Lane, Brough	01482 662211
Fish & Chip Shop & Mobile Van	The Catch	20A Westgate, North Cave	01430 424550
Funeral Services	Hortons	The Old Police Box	01430 423031
Garage Doors	Brough Garage Doors	info@broughgaragedoors.co.uk	07718 955807
Garden maintenance service	Pure Gardens (A Underwood)	-	07904 738196 / 01430 425211
Gardening, patios, landscape, fencing	ROS Solutions, Matthew Stubbins	Main Street, Hotham	07854 493175
GMP Garden Services	T Vessey-Baitson	35 Fairfield	07800 896679 / 01430 421937
Graphic Design and Print	Innovative Graphics Limited	christine@innovative-graphics.co.uk	07815 881103
Graphic Design and Print	Kinroy Design	Canal Side West, Newport	07921 728235
Graphic Design and Print	Little Graphic Design Company	Beck Road, Everthorpe	01430 424317
Hairdressing + Beauty Therapist	Curlaway + A Beauty Lounge	1 Orchard View, Church Street	01430 423712
Improve health and fitness	Neil Thompson Strength & Fitness	South Cave	07902 462387
Joiner	Neville Dykes	14 Newport Road	01430 422977
Joiner	M J Morton	1 Westgate	01430 470990
Landscape & Property Maintenance	Turner & Wheel	39 Church St, North Cave	07939 427721 / 01430 235238
Landscape Architects (Chartered)	2B Landscape Consultancy Ltd	www.2bconsultancy.co.uk	01430 423204
Landscape Contractor	Humber Landscapes	8 Nordham	07715 522441 / 01430 470920
Livery yard, riding lessons	Sue Body	South Ings Lane	01430 422238
Nails and Beauty	Iconic Nails & Beauty	Low Lea, Main Road, Newport	07947546725
Newsagent, Post Office & Store	North Cave News	40 Church Street 6-8 daily 7-8 wkd	01430 422363
Optician	J Tomlinson	Newbald	0800 9775994
Painter and Decorator	Andrew James	10 Blackthorn Close, Newport	07926 813281 / 01482 651952

Business/Service	Name	Address	Telephone Number
Painter and Decorator	Craig Lane	24 Westgate	07825 325547 / 01430 440471
Piano, Singing, Theory & Drama	Margaret Iveson, Teacher	Newport Road	07951144820 / 01430 422789
Plants, vegetables, eggs	Marjoram Nurseries	Low Road, Everthorpe	01430 424493
Play - Adventure	William's Den	Wold Hill, North Cave	01430 472230
Plumber	AWS Plumbing and Heating	23 Church Street	07886 026993 / 01430 470827
Plumber	G Greaves Plumbing & Heating	68 Main Road, Newport	01430 266130 / 07429 173175
Precision Engineers & Machinists	John Dunn Engineering	Cottage Farm Works, Breck Lane	01430 424957
Prison Printshop	Richard Johnson	HMP Humber	01430 426507
Property Maintenance	Simon Tomlinson	84 Westgate, North Cave	07954 990203
Pub and Restaurant	Hotham Arms	2 Main Street, Hotham	01430 422939
Public House	The White Hart	20 Westgate, North Cave	01430 470940
Reflexology/Reiki/Foot care	Walking on Air Therapies	2 Littlemoor Close, North Cave	07789 595496
Restaurant / Café	William's Den	Wold Hill, North Cave	01430 472230
Sand and Gravel	Breedon, North Cave Quarry	The Quarry, Newport Road	01430 421503
Science Tutor. Ages 11 - 16	Martin Spurgin	10 Fountains Way, North Way	07375 681034
Sewing Services	Michelle Simpson	7 Manor Road, North Cave	07870 661259
Singing	Marissa Steer, Teacher	22 Westgate, North Cave	07572 169215
Snacks and drinks, orders	The Little Butty Bus	North Cave Wetlands	07766 117316
Sports Massage	Contour Therapies	8 Denmark Rise	01430 470601
Sports Massage & rehabilitation	Luke Lambert	26 Westgate	07494 447117
Tailoress for alterations etc.	Mrs Rosemary Cousins	7 Station Road, North Cave	01430 424397
Therapy training	www.inspiretherapytraining.com	Manor Road, North Cave	07917 097419
Timber Merchants and Logs	Geenix Sawmills	Crosslands Lane, North Cave	07544 861005
Tree/hedge cutting and decking	Andy Davey	1A Main Street, Hotham	07957 881298
Tree Surgery and Consultancy	East Yorkshire Tree Company	North Cave	01430 423966
Tree Surgery, Stump Grinding	D R Minns Tree Surgery	Beck Road, Everthorpe	07449 002674
Vegetable oil processor	Brocklesby Ltd.	Crossland Lane	01430 424900
Venue dressing	Something Borrowed	North Cave	07450 008224
Vintage Crockery,Cutlery & Crystal Hire	Take That & Tea Party - Olwyn Latham	The Owl House, 6 Milestone Court	07833 432539
Wedding Services	Style My Venue - Liz Ewing	10 Church Street, North Cave	07812 422007 / 01430 424115
Wildflowers and Plants	Mires Beck Nursery	Low Mill Lane, off Mires Lane	01430 421543
Wills Estate Administration	Swan Solicitors (David Rhodes)	Professional service in your home	01482 631864

Are you a business?

Would you like a free listing in the 'Local Businesses - Use them or lose them' table?
Contact: The Editor giving information, as shown above.

Advertising space - if you would like to advertise, please contact The Editor for rates and availability.

Village Link Contacts

Bill/Liz Blackledge

Editor/Typesetter/Webmaster

E-mail editor@villagelink.info

Simon Plows

Delivery & Distribution

Telephone 01430 423204

Sarah

Contact/School

Telephone 07841 052219

Telephone 01430 422551

Content for next issue (February - March) to us by 5 January please

NEVILLE DYKES

JOINER

NOW FITS uPVC WINDOWS,

FASCIAS AND SOFFITS

ALL TYPES OF WOODEN FENCING

Telephone: 01430 422977



J B Electrical Contractors

Established 2009

Telephone - 01430 423291 / 07983 991316

38 Beck Road, Everthorpe, Brough, East Yorkshire HU15 2JH



New Installation - Full & Part Rewires
Consumer Unit Upgrades & Replacement
Extra Socket, Switches & lights In Outdoor
Electrical Inspection & Testing
All Types Of Repair Work & Fault Finding
No Call Out Fee & Free Quotations
Fast & Friendly Professional Service
No Job Too Big or Small & Fully Insured



www.jbelectrical.biz





If you move to another part of the country or undergo a change of personal circumstance u3a can be a great way to get to know new people in an unpressured, social setting.

Caves u3a's aim is to provide interesting things for older people to do in their free time.

On December 2nd we have our Christmas lunch at Cave Castle.

This is in addition to our regular Interest Group meetings. If you search for our website: www.caves.u3asite.uk

you will find the full range of activities that we offer. To make contact you can send us a message to u3aHeatherTurner@gmail.com Or, if you prefer to contact us by phone, please call Heather on 01430 424835.

NORTH CAVE PRESCHOOL



Opening hours:

Mon - Fri 8:00AM - 5:00PM

Term-time only, from 20 months

www.northcave-preschool.co.uk

northcavepreschool@hotmail.co.uk

07968 239303

NORTH CAVE INDOOR BOWLING CLUB

Would you like to come and try Indoor Bowls?
Gentle exercise in a warm, friendly, environment?
Open every day from 10:30a.m.

Call and have a cup of coffee - see what it's all about
Townend Lane, North Cave, HU15 2LZ



Call: 01430 421378 - Email: northcavebowls@btinternet.com - www.northcavebowls.co.uk

William's Den

Where Imagination Runs Wild

DID YOU KNOW...

Everybody is welcome to pop in to our Restaurant – no kids required!!

Our (ex 5 star hotel) Head Chef and her team lovingly prepare our award winning homemade food.

Try it – you'll be surprised!

Restaurant Open

10am – 3pm

Monday - Sunday (school holidays)

Friday – Sunday (term time)

Check website for details:

www.williamsden.co.uk

or phone:

01430 472230



G. GREAVES PLUMBING & HEATING

Tel: 01430 266 130

Mob: 07429 173 175

email:

gavdaplumber@hotmail.co.uk

68 MAIN ROAD
NEWPORT
BROUGH
HU15 2PP



**Specialist
Heating Systems**

- Kitchen & Bathroom Installations
- Central Heating Systems
- Boiler Breakdowns



- Annual Service and Landlord Safety Inspections & Repairs
- No Call Out Charges
- Free Quotes

Newbald Live Music & Events

Newbald Live Autumn Program



We have more high quality full live music in the run up to

Christmas at Newbald Village Hall and tickets are now on sale. The 2025 line-up is looking pretty tasty as well, starting in February with our first Sunday matinee (4.30pm start).

If you haven't made the little trip up the road, why not come and give us a try - we guarantee you'll have a great evening! Online links are on our website: www.newbald.live where you can also sign up for our mailing list which allows you to purchase all tickets with no booking fees.

Sat 21st Dec – Elizabeth & Jameson + The Rosewoods, doors 7.30, tickets £14



Hannah Elizabeth & Griff Jameson have joined forces to create a gorgeous acoustic folk-roots sound which encompasses both their individual musical backgrounds in traditional folk and folk-pop/rock. As this is our Christmas show, the second half will feature The Rosewoods, Hannah & Griff's alter ego covers band performing Christmas classics to get you in the festive spirit!

Looking forward to 2025, we have the return of some really popular acts, including the inimitable and hilarious **Scott Doonican on Friday 11th April**.

We are also looking forward to a couple of Sunday Matinee performances (starting

4.30pm), the first on **23rd Feb, featuring acclaimed singer-songwriter Sorrel Nation**,



whose recent album release has had superb reviews. Tickets are only £12.

Then on **Sunday 23rd March, we welcome back the Rye Sisters**, a duo from across the



water (the Humber, not the Atlantic!) who, based on their last show here, promise gorgeous harmonies and a fun, lively afternoon for a genuine bargain ticket price of £10!

Remember - check our website or sign up to our mailing list to keep in touch with all upcoming events.



LOCAL EYECARE & HEARING CARE

WITH THE
EMPHASIS
ON CARE

- THOROUGH EYE EXAMINATION
- CONTINUITY OF CARE
- GREAT CHOICE OF FRAMES
- IMPARTIAL ADVICE



John Tomlinson **optician**
The Best in Eyecare Since 1991

BOOK ONLINE OR
CALL FOR
APPOINTMENT

CALL FREE: 0800 977 5994

www.opticians.book.app

Westfield House, North Newbald, YO43 4SE